

HAIER

HOUSEHOLD ELECTRICAL DISHWASHER

Service Manual

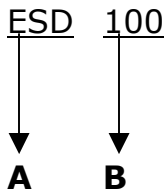
PART# DW-8888-08

HAIER AMERICA TRADING, LLC
www.haieramerica.com

TABLE OF CONTENTS	PAGE
Product Code Explanation and Series Introduction	3
Features	3
Specification	3
Safety Precaution	6
Warning and Conditions	8
Net Dimension	11
Installation And Accessory Parts	11
Parts and Functions	13
Function Schedule	21
Program Indication	22
Maintenances Service and Trouble Shooting	24
Circuit Diagram	31
Resistance Measurements and Codes	32

1. PRODUCT CODE EXPLANATION AND SERIES INTRODUCTION

Model Identification



A: Energy star dishwasher

B: Series of factory design

Examples:

ESD101

Energy star dishwasher, NO.101

2. FEATURES

2.1. Easy Control and Variety of Washing Mode.

This model adopts mechanical controlling structure, with an integrated knob, thus variety of washing programs are available for selection by turning the knob.

2.2 Pre-washing

It may avoid the peak of using electricity effectively, saving electricity consumption.

2.3 Rapid Wash

Economic, fast cycle to be used on very dirty dishes right after they are used. No drying cycle.

3. SPECIFICATION

DISHWASHER		BI	BI
<i>Last update</i>	2002-12-31		
Supplier Type Suppliers bar code N°. Sales Brand / Model	N°. EAN GXCH	ESD100	ESD101

Sales bar code N°.	EAN		
Key-features			
Energy efficiency	Class	Energy Star	Energy Star
Washing efficiency	Class	-	-
Drying efficiency	Class	-	-
Noise level power / pressure	dB(A)	56/-	56/-
Energy consumption*	kWh / year	430	430
	kWh/24h	-	-
Water consumption*	Gallon / min.	4.8	4.8
Duration of program (<i>Based on 65° normal prog.</i>)		-	-
Place settings (<i>international standard</i>)		12	12
Programs (<i>incl. additional program functions</i>)	n°	5	5
Program selection single dial / electronic		● / -	● / -
Washing temperatures	°F	122	122
Spray levels	n°.	3	3
Certification's (ETL/CSA/UL/EEV/ISO9001)		ETL / DOE/EEV/ISO 9001	ETL / DOE/EEV/ISO 9001
2. Technical equipment			
Work top / -removable		- / ●	- / ●
Decor frame / optional		● / ●	● / ●
Water heating element hidden / open		- / ●	- / ●
Refill spy-lamps salt / rinse aid		- / ●	/ ●
Program progress indicator LED / visual		- / -	- / -
Inner door S = stainless steel / P = plastic		S	S
Interior S = stainless steel / P = plastic		S	S
Dispenser system Detergent / Rinse aid		● / ●	● / ●
Water softening system / n°. of water hardness levels		-	-
Electronically controlled water hardness		-	-
Easy clean filter system / self cleaning micro filter		● / -	● / -
Height adjustable top basket		●	●
Cutlery sliding tray / removable basket		● / ●	● / ●
Plates sizes bottom basket / upper basket	Inch	--	--
Water inlet hose cold water / hot water		● / ●	- / ●

	Water drain hose / -hose support		●/●	● / ●
	Drying system Condenser / Turbo vented		Natural	Natural
	Height adjustable feet n°. / max. Inches		4/-5/64	4/-5/64
	Delay timer (<i>from - to</i>)	h	-	-
3.	Safety systems			
	Child resistant door lock	<i>CDL</i>	-	-
	Anti flood system	<i>AFS</i>	●	●
	Waterproof anti leak system	<i>ALS</i>	●	●
	Water return protection	<i>WRP</i>	●	●
	Acqua Stop kit		-	-
4.	Programs			
	Pots & Pans Wash	°F	122	122
	Heavy Dry	°F	-	-
	Normal Wash	°F	122	122
	Light Wash	°F	-	-
	Glassware Wash	°F	122	122
	Rinse & Hold Wash	°F	Cold Water	Cold Water
5.	Additional program settings (optional function key)			
	Half load Wash	°F	-	-
	Hi-Temp Wash	°F	161	161
	Heated Dry	°F	-	-
6.	Technical data			
	Voltage/frequency	V/Hz	AC115V/60Hz	AC115V/60Hz
	Nominal power(W)	W	1460	1460
	Main fuse (intensity)(A)	A	15	15
7.	Product dimensions			
	Unit dimensions (H x W x D)	In.		
	Depth with open door	In.		
	Net weight	lbs	88.5	88.5
8.	Built-In			
	Requested measures of niche (H x W x D)	In.	34X23- 9/16X22-7/8	34X23- 9/16X22-7/ 8
	Dimensions of door panel (H x W)	In.	28-1/2X23- 9/16	28-1/2X23- 9/16
9.	Packing			
	Dimensions of packing (H x W x D)	In.	36-7/32X26- 9/16X25- 19/32	36-7/32X26- 9/16X25-19 /32
	Weight of packing (all materials)	lbs.	99.5	99.5

10.	Information for importer			
	14,5m(84CBM) Truck load capacity	Pcs	-	-
	Jumbo (120 CMB) Truck load capacity	pcs	-	-
	40' Container load capacity	Pcs	-	-
	40' HC load capacity	Pcs	144	144
	Max. Failure (12 Month after sales to end customer)	Pcs/%	-	-
11.	Packing materials / Recycling symbols	RS	RezY	RezY
	Carton (weight)	lbs	9.93	9.93
	Polistyren (Weight)	lbs	3.35	3.35
	Polyetylene foil (Weight)	lbs	0.14	0.14
	Other packing materials (Weight)	lbs	0.12	0.12
	Wood (weight)	lbs	7.30	7.30
12.	Delivery Time of First Batch			

4. SAFETY PRECAUTION



The unit must be installed by experts. If the customer himself installs it, it is easy to cause water leakage, electric shock wire and fire. After installation and test run, if there is no fault, then tell the customer how to use the dishwasher.



Use the special power socket

If the power cable connected at the middle way, or a prolonged cable or a socket with several spigots is used, the cable may turn hot or catch fire.

The special socket must be grounded firmly.



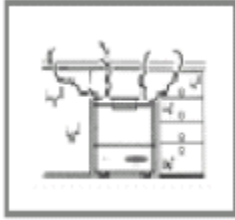
Do not use the unit outdoors

If it is used in wet environment, it may lead to electric leakage or electric shock.



Never touch the power plug, electric parts, nor operate the switch with wet hands.

It is easy to cause electric shock



Forbidden

Do not use the unit as flush dishwasher

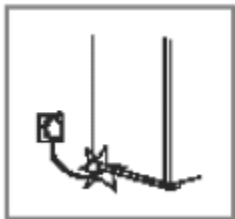
It is difficult to eliminate heat, it may cause electric shock or wet around the appliance.



Disassembling is forbidden

Nobody is allowed to disassemble or repair the appliance except special service men.

Abnormal action may lead to injury, electric shock or fire.



Forbidden

Power cable must not be damaged

If the power cable is reprocessed, stretched, knotted, or pressed, the cable may be damaged, electric shock or fire may occur.

If the supply cord is damaged, it must be replaced by the manufacturer or its service agent or similarly qualified person in order to avoid a hazard.

Dishwasher shall be set evenly.



Warning

Do not touch detergent with hands when you use it, to avoid contact with eyes.

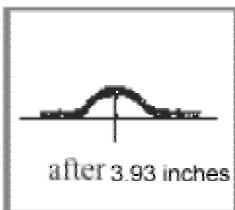
Otherwise, it may lead to rough skin. If it enters your eyes, it may affect your eyesight. Prevent children from approaching it.



Take off the plug

When abnormal phenomenon appears, turn the power switch to "Off", take off the power plug, or cut off the main power supply and get in touch with HAIER after-sales service center at once.

Continually operation at abnormal state may cause electric shock or fire



Forbidden

The draining hose should be as lateral as possible.

Do not let the end or the middle part of the draining hose protrude 3.93 inches high. It is an indirect draining type. Draining water cannot go up. If protrusion is higher than 3.93 inches, water cannot be drained out completely. If hose is shrunken or bent, it may affect water draining. If water cannot be drained out smoothly, the machine will stop operation.



Cut off the power supply before cleaning or checking

Electric shock or burn may occur by carelessness.

Take off the power plug to prevent thunder.

If the plug is in, it may cause fault fire.

5. WARNING AND CONDITIONS




1. shelf (The container which dishes are put in is called shelf)

Caution	
	Do not wash non-heat-resistant tableware: such as lacquer-coated containers, aluminum or silver food containers. Otherwise, they may be deformed, faded or damaged.
Forbidden	



2. Put the shelf into the washing box

Caution	
	Put the shelf into the unit, after the door is closed, food containers must not touch the inside of the washing box. If there is any contact, rearrange them. Otherwise, they might be broken.
Caution	




3. Put in detergent

 Caution	
	Special detergent must be used. Kitchen-used neutral detergent may cause fault.
Caution	
	Detergent is forbidden to put in during "flush washing" because detergent may leave on the food containers, that may be bad to your health.
Forbidden	

4. End of cycle

 Caution	
	Turn the tap off at the end of washing program to prevent water leakage due to high pressure.
Forbidden	

5. Weekly maintenance

 Warning	
	Do not flush the dishwasher directly with water. Otherwise, it will cause shot circuit, electric shock, rust and faults.
Forbidden	
	Do not touch plug and electric parts or operate the power switch with wet hands to avoid electric shock.
Forbidden	



Warning



Caution

Check the power plug and the socket for dust periodically. The plug shall be inserted completely into the socket. If there is dust on it, connection is not completely. That may cause electric shock or fire.



Caution

Cleaning should be done only after draining and cooling of the washing box. Otherwise, you may get burn-ed.



Caution



take off
the plug

If the unit will not be used in a week or more, take off the power plug for safety.

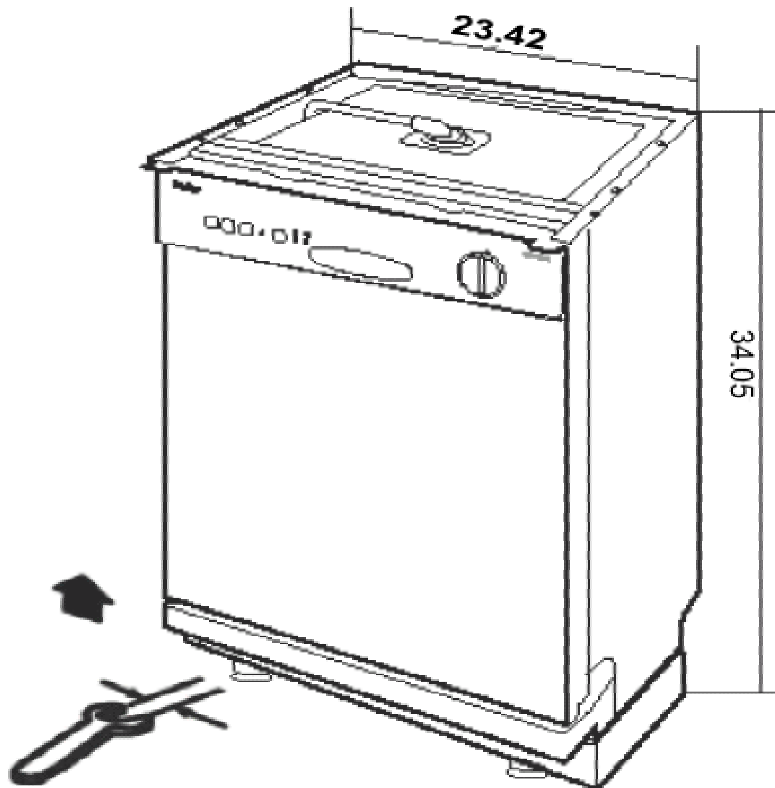
Dust adhering to the plug or the socket may cause overheat or fire.



take off
the plug

When cleaning or conducting maintenance, switch off the power switch and take off the plug. Otherwise, if water enters the unit accidentally, it may cause electric shock or burn.

6. NET DIMENSION (INCH)



7. INSTALLATION AND ACCESSORY PARTS

7.1 Position the Appliance

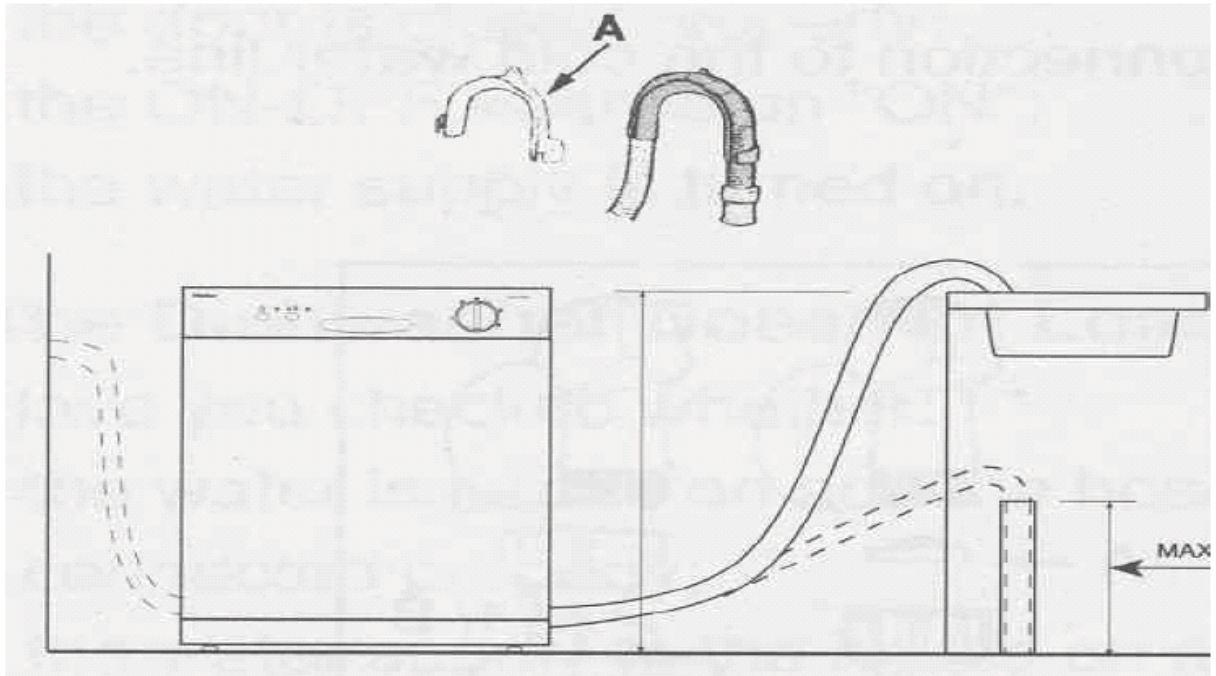
Position the appliance in the desired location. The back should rest against the wall behind it, and the sides, along the adjacent cabinets or wall. The dishwasher is equipped with water supply and drain hoses that can be positioned on the right or the left to facilitate proper installation.

7.2 Leveling the Appliance

Once the appliance is positioned, adjust the feet (screw them in or out) to adjust the dishwasher, making it level. In any case, the appliance should not be inclined more than 2°. If the appliance is level, it will help ensure proper performance.

7.3 Drain Hose Connection

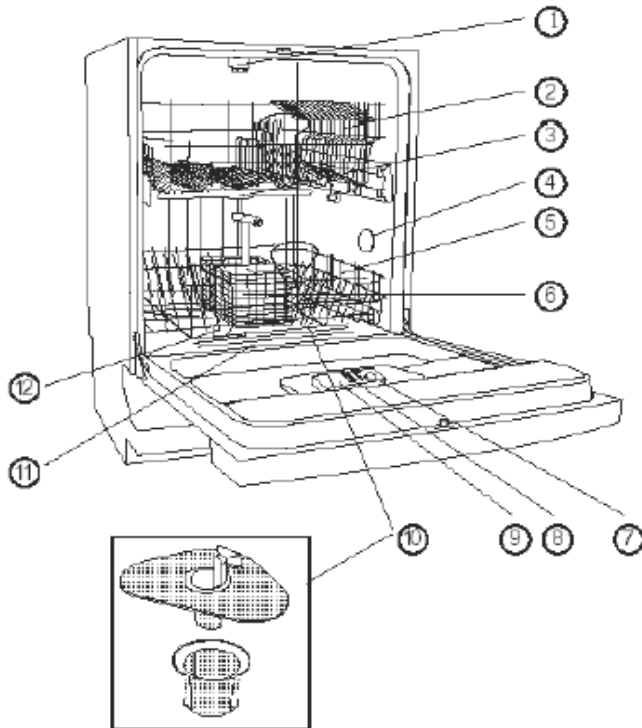
Insert the drain hose into a drainpipe with a minimum diameter of 1.57 inch ,or let it run into the sink, making sure to avoid bending or crimping it. Use the special plastic support that comes with the appliance (see Fig.2). The free end of the hose must be at a height between 15.7 and 39.37 inches and must not be immersed in water.



7.4 Electrical Connection

After making sure that the voltage and frequency values for the current in the home correspond to those on the rating plate (located on the stainless steel inner door of the appliance) and that the electrical system is correct for the maximum voltage on the rating plate, insert the plug into an electrical socket which is earthed properly (the earthing of the appliance is a safety requirement mandated by law). If the electrical socket to which the appliance must be connected is not appropriate for the plug, replace the plug, rather than using adaptors or the like as they could cause overheating and burns.

8. PARTS AND FUNCTIONS



1. upper Sprayer
2. Deluxe 2 position adjustable Upper Rack with Stemware Holders.
3. Middle Spray Arm
4. Pressure Relief Valves (one located at the upper left corner (not shown))
5. Lower Rack
6. Removable Split Silverware Basket
7. Rinse Aid Compartment
8. Pre-Wash Detergent Compartment
9. Main Wash Detergent Compartment
10. Triple Filtration System (Located at the bottom under the Lower Rack)
11. Heating Element (Located at the rear and under the Lower Rack)
12. Lower Spray Arm

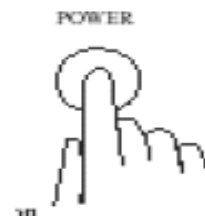
Understanding the Dishwasher Control Panel:

❖ Power Button

Press "POWER" button in to turn the power "ON".

Press this button again to turn the power "OFF".

Note: You will see the "Power On Indicator Light" lit when the unit is on.



❖ **Hi-Temp Wash Button**

Press "HI-TEMP WASH" button in to turn the "HI-TEMP WASH" option "ON". Press this button again to turn the "HI-TEMP WASH" option "OFF".



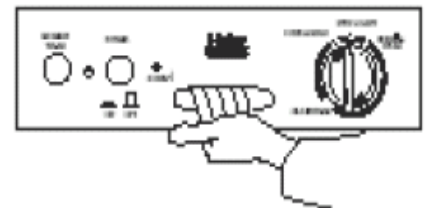
❖ **"Rinse ✓" Indicator Light**

When "Rinse ✓" indicator light is lit, this means the rinse aid detergent is empty in the rinse aid compartment. You need to refill rinse aid at this time.



❖ **Door Latch**

To lock the door, push the door with light force until you hear the "Click." To unlock the door, squeeze the door latch and pull towards you.



❖ **Preparing to Wash Dishes**

To get a good results, practice the following before you put dishware in the dishwasher: Discard big chunks of food from the plate before loading.

Remove sticky foods and loosen burned-on foods before loading. Empty liquids such as juice, soup, soda, coffee or tea from glasses and cups before loading.

Rinse off acid based liquid, such as vinegar or lemon juice right a way. Failure to do so may cause discoloration to plates, food containers or internal cabinet. Always check manufacturer's recommendations before you start washing items.



❖ **Tips to avoid stain and films**

The following suggestions are recommended to prevent stains and films on dishware and utensils items:

You must rinse all dishware, silverware, glassware and food containers immediately after use. Some citric based food products, coffee, tea and iron deposit in water can cause yellow or brown film to form on the inside surface if left on for a long time or if rinsed immediately.

You must check your water hardness to see whether you need to use more or less detergent to wash. If water is extremely hard, then it may be causing stains on items. You may need to use a water softener.

Do not overload the dishwasher.

Avoid improper loading.

Be sure to use the recommended water temperature to wash dishware.

Do not use too little detergent.

Do not use old or damp powder detergent.

Do not load aluminum utensils improperly. Aluminum utensils can cause gray or black marks to appear on porcelain utensils if they are touching during wash cycle.

❖ **Loading the Lower & Upper Rack**

To get maximum cleaning results, follow the recommendations below before you start the dishwasher:

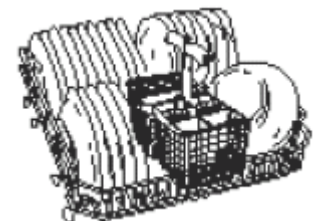
Note: Do not wash any heat sensitive or any other items that are not designed for automatic dishwashers.

Keep all tall dishware and food containers away from the spray arm rotation.

Place food containers such as cups, glasses, bowls, saucepans and casserole dishes with soiled surface facing in the downward position.

To avoid any type of damage to glassware such as coffee/tea cups, beverage, wine and champagne glasses, do not load them on the bottom rack. Place these items on the upper rack. Put cups upside down on the top of the cup/stemware rack and put wine or champagne glasses upside down between the divided segments of the cup/stemware rack to secure them properly. Do not load dishware or food containers that are made of wood or iron. These items are not considered dishwasher safe. Do not jam the glassware items together when loading.

Place delicate items on the upper rack.



Do not load tall dishware or cookware items near the middle spray arm. Move racks slowly in and out to avoid slamming the dishware items together.

Make sure all dishware and glassware items are securely in place when loading to avoid falling over or striking against each other.

❖ **Adjustable Upper Rack System**

The upper rack has two positions, which allow you to modify the rack system according to your current space needs. The flexibility of the upper rack is ideal for washing tall dishware and glassware items.

For Example: Adjusting the Rack to the Lower Position gives you the flexibility to load taller wine or champagne glasses in the upper rack, simply remove the rack and bring it to the lower position.

For Example: Adjusting the Rack to Upper Position gives you the flexibility to load tall dishes on the lower rack.

Steps to Remove the Rack

- 1) Open both sides of the rail guards from the upper rack.
- 2) Slide the rack out.
- 3) Place the rack to your desired position.
- 4) Close both sides of the rail guards so rack will not slide out.

❖ **Loading Split Silverware Basket**

Your dishwasher has a removable split basket with two compartments that can be separated to give you loading flexibility in order to accommodate flatware and lower rack capacity needs. This option saves space when only half the unit is needed.

Simply remove the basket from the dishwasher to load silverware and place it back once you finish loading.

❖ **Steps to Split Silver Basket**

- 1) Put your right hand in right side of the basket and your left hand in the left side of the basket.
- 2) Simply slide the basket with light force to unlock/split by pushing it forward and pulling it towards you until you see that both hooks come out of the elongated holes in the middle.

Note: Do not use heavy force to split the basket because this may cause damage to plastic hooks to break off.



3) To put both halves together again, use both hands to level the split baskets and sliding each hook into each elongated hole on both sides. Now, slide with light force to attach/lock by pushing it forward and pulling it towards you until both baskets snaps in easily. To avoid any type of injury, load knives and forks face down. Try to mix spoons, knives and forks for better cleaning and drying and to prevent nesting.

Do not mix stainless steel and silver items because you may damage the silver finish on silver items.

Do not load tall items next to the upper spray arm because it may block the rotation.

Do not load tin, pewter and non-dishware filters.

These items are not considered dishwasher safe.



❖ **Proper Use of Detergent:**

The amount of detergent to use depends on the type of water in your living area whether it is hard or soft and whether items are lightly or heavily soiled.

Water softness or hardness is measured in grains content per gallon (gpg). You can find out the gpg level by calling your local Environmental Protection Agency (EPA) in your county.

If you find that the gpg level is higher in the water, then the water will be harder in your living area. You will need more detergent to clean. If gpg level is lower, then the water will be softer in your living area so you will need less detergent to clean.

See the following table to understand the "water hardness type" and gpg level.

Water Hardness Type	Gpg
Hard	10+
Medium	4-9
Soft	0-3

Note: If gpg level is over 12, then water is very hard. You may need water softener to improve the water quality and the performance of your dishwashing.

Note: The quality of the detergent will make a big difference in the cleaning of dishes. Detergent that is damp or too old will not be as effective to clean because the active ingredients will be phased off. The detergent will then not work properly.

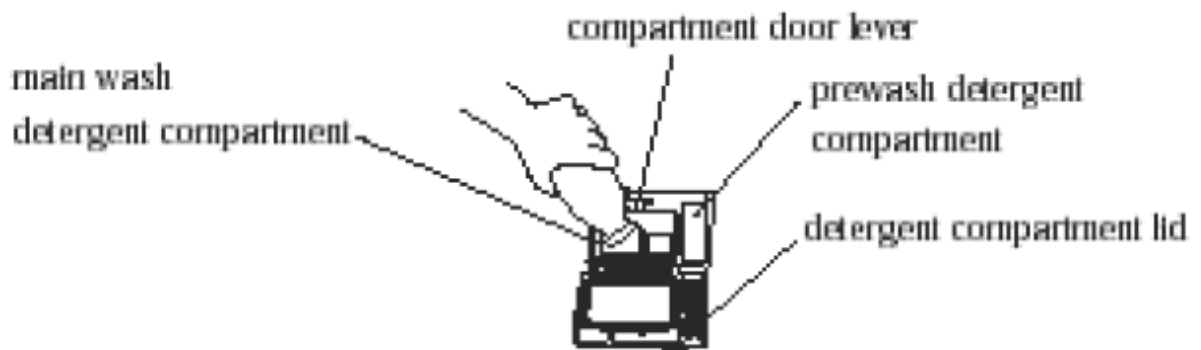
Note: Use only "Automatic Dishwasher Detergent" for your dishwasher. Other types of detergents that are not for dishwasher use may cause overusing and foaming. Do not use detergents that are dried, caked or moist. These types of detergents will not dissolve properly and will not clean effectively.

❖ **Pouring Dishwasher Detergent**

Use the recommended amount of detergent for your wash loads. Measure and pour the detergent into the large compartment for the main wash. The detergent for the pre-wash goes into the small compartment next to the main wash compartment.

Note: For the pre-wash you should use one-half the amount of detergent that you use for the main wash.

We recommend that you use a Rinse Agent to help remove spots and prevent new film build-up on your dishes, glasses, flatware, cookware and plastic.



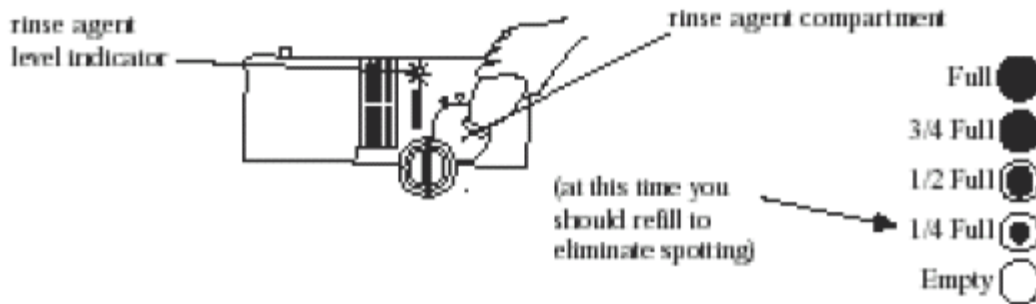
Note: Use only a liquid form of rinse agent in the dispenser

❖ **Pouring Liquid Rinse Agent into the Dispenser**

Use the recommended amount of rinse agent for your wash loads. The rinse agent dispenser is located next to the detergent dispenser. During the wash cycle, it automatically releases a preset amount of rinse agent during the last rinse cycle.

When the dispenser is full, the see through rinse agent level indicator will be dark.

When it is empty, it will be clear which means you need to pour in more.



Note: A full dispenser should last approximately one month. If you want to adjust the amount of rinse agent dispensed, the dispenser has 1 to 6 levels that you can adjust to. Simply rotate the dial to your desired settings.



❖ **Checking Water Temperature**

- Your incoming water must be between at least 120°F / 49°C and at most 151°F / 66°C in order to clean effectively and prevent damage to your dishware.

Note: The minimum incoming temperature must be at 120°F/49°C in order for the detergent to dissolve properly.

If you are unsure of the temperature of your hot water:

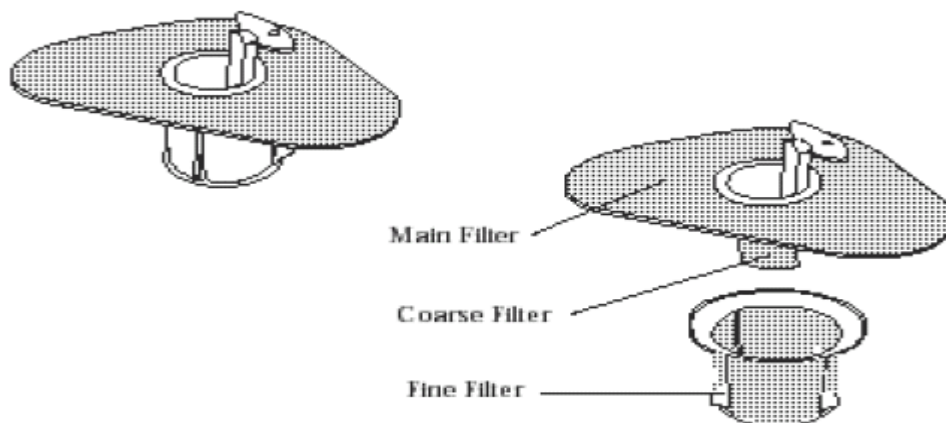
1. Simply open the hot water faucet and let it run for a minute and fill a glass.
2. Take a thermometer and check the temperature of the water.
3. If the temperature is below 120°F / 49°C, then you need to adjust the water temperature on your water heater in order to maintain that temperature level.

❖ **Overflowing Protection:**

- In case the water level is rising above the highest acceptable point, the security pressure switch will activate the drain pump automatically.

❖ **The Filtration System**

For your convenience, the three level filtration system is conveniently located inside the dishwasher tub beneath the lower rack and consists of a Main Filter, Coarse Filter and Fine Filter.



Main Filter: The purpose of this filter is to trap food and soil particles.

Coarse Filter: The purpose of this filter is to trap large items such as pieces of bone or glass that might clog the drain (attached to main filter).

Fine Filter: The purpose of this filter is to trap and hold tiny soil and food residue and prevent it from being re-deposited on the dishes during a cycle.

Warning: Never run your dishwasher without the filters in place. Failure to do so may cause drain blockage and pump damage.

❖ Wash Selector Knob

When selecting a wash cycle, turn the knob "CLOCKWISE" to your desired setting by matching the knob "Pointer" symbol to the cycle "dot" symbol. Once both are lined up, press "Power" button to begin the wash process. (You will hear "Click" and the wash cycle will start automatically.) A "lick" will signify the automatic start at the wash cycle. Warning: The wash selector knob is designed to work only in a clockwise direction. DO NOT turn the knob "COUNTER CLOCKWISE." Turning in a counter clockwise direction may cause damage to the wash selector.



Selecting Wash Cycles Select the appropriate cycle based on the load

and soil level. For your convenience, the dishwasher has Pots & Pans, Normal, Glassware and Rinse& Hold wash cycles that you can select from.

9. FUNCTION SCHEDULE

Cycle	Sani-wash	Rapid wash button	Cycle Selection Information	Description of Cycle	Detergent	Rinse Aid
Pots & Pans			Normally dirty dishes, pots and pans. Standard daily cycle	Pre-wash with cold water. Extended wash at 131°F. Rinse with cold water. Rinse with hot water at 149°F. Drying.	0.06 lbs	•
Port & Pans	•		Very dirty dishes, pots and pans. (not to be used with delicate items)	Pre-wash with hot water. Extended wash at 161.6°F. Rinse with cold water. Rinse with hot water at 161.6°F. Drying	0.06 lbs	•
Normal wash			Normally dirty dishes, pots and pans without dried on residue	Extended wash at 149°F. Rinse with cold water. Rinse with hot water at 149°F. Drying.	0.05 lbs	•
Rinse & Hold			For dishes that need to be rinsed and dried only.	Rinse with cold water. Rinse with hot water at 149°F. Drying		•
Glassware			Economic, fast cycle to be used for items which are sensitive to finger. Run immediately after dishes are used.	Wash at 122°F. Hot rinse at 149°F. Drying.	0.03 lbs	•
Glassware		•	Economic, fast cycle to be used for items which are sensitive to	Wash at 122°F. Rinse with cold water	0.03 lbs	

			finger. Run immediately after dishes are used.			
Soak			Pre-wash of dishes, pots and pans while waiting for the load to be complete after the subsequent meal.	Short cold wash to prevent food residue from drying on the dishes.		

10. PROGRAM INDICATION

10.1 Selecting Wash Cycles

Select the appropriate cycle based on the load and soil level. For your convenience, the dishwasher has Pots & Pans, Normal, Glassware and Rinse & Hold wash cycles that you can select from.

- Pots & Pans Wash Cycle

This cycle is used for heavily soiled pots & pans, cookware, dishware, silverware and glassware items with dried-on or baked-on soils.

Note: This cycle may not remove burned-on foods.

- Normal Wash Cycle

This cycle is used for medium or heavily soiled dishware, glassware and silverware.

- Glassware Wash Cycle

This cycle is used for lightly soiled glassware, chinaware, pre-rinsed dishes and silverware.

- Rinse & Hold Cycle

This cycle is used for rinsing partial loads that will be washed later.

Note: Do not use detergent with this cycle.



10.2 Selecting Wash Option

- Hi-Temp Wash

You can select this option with Pots & Pans, Normal or Glassware wash cycles.

Note: Do not use this option with Rinse & Hold Cycle.

Note: When this option is selected, water temperature boosts up between 161⁰F-167⁰F. "HI-TEMP WASH" helps: kill bacteria, dissolve detergents, remove sticky and greasy substances off the dishware and as well as effective cleaning.

Note: Any interruption during wash and rinse cycles or if the incoming water temperature is too low, proper water heating temperature cannot be achieved and the Hi-Temp Wash heating temperature conditions may be affected

10.3 Check List for Wash Process

1) Make sure all items are loaded in the racks and silverware basket properly.

Note: Do not load tall dishware or cookware items near middle spray arm as they may block the spray arm from rotating.

2) Pour the proper amount of detergent into the detergent dispenser.

Note: If "RINSEÖ" indicator light display is "ON", it is indicating that it is empty, add "Rinse Aid" agent at this time.

3) Close the door and latch properly.

4) If you need to use the "HI-TEMP WASH" option, you must do so before selecting the wash cycle.

Note: This option can be selected only with Pots & Pans, Normal or Glassware Wash Cycles except Rinse & Hold Cycle.

5) Select the desired wash cycle by matching the knob "Pointer" to cycle "Dot". Once you are at this point, turn the power button "ON". You will hear a "Click" and the wash process will begin at this time.

6) To turn the power off at the end of the cycle, simply press the "POWER" button.

7) If you want to speed up the drying process after completion of the cycle, keep the door open slightly to release the moist air.

Warning: Keep children away from the machine when the door is opened to dry the dishware because the moist hot air exiting out of the door may cause harm.

10.4 Canceling or Resetting Wash Cycle

Note: The dishwasher will release detergent automatically within a few minutes when starting a wash. To avoid the "release of detergent" before you cancel or reset the wash cycle, you must press "POWER" button immediately.

Once you have reset to a new wash cycle, you must refill the detergent compartment if it is open and empty because the detergent from previous wash cycle may have already been released.

Follow the steps below to cancel or reset a wash cycle:

- 1) To cancel or reset a wash cycle, press "POWER" button to "OFF" position to turn the dishwasher off. You will notice that the power indicator display light shuts off.
- 2) If you need to reselect "HI-TEMP WASH" option, you must select it now by pressing the "HI-TEMP WASH" button before selecting the wash cycle. Note: "HI-TEMP WASH" option cannot be selected with "RINSE & HOLD" cycle.
- 3) To reset a wash cycle, turn the knob "Clockwise" to your desired wash cycle setting.
- 4) Press "POWER" button again to the "ON" position to turn the dishwasher on. You will hear a "Click" that signifies the automatic start of the wash process. You will also notice that power indicator display light turns on.

10.5 Pausing a Wash Cycle

The "POWER" button serves the purpose of the "Pause" function as well as powering the machine on or off.

If you need to pause in the middle of the cycle to add or remove any items, follow the steps below:

- 1) Press "POWER" button to the "OFF" position to pause the cycle. You will notice that the power indicator display light shuts off.
- 2) Open the door by squeezing the door latch slowly.
Note: Do not open the door until the water spray action stops. Be careful of moist hot air that may rise out of the dishwasher.
- 3) Add or remove items. Once you have finished adding or removing, simply close the door properly.
- 4) Press the "POWER" button to the "ON" position to resume the cycle. You will notice that power indicator display light turns on.

11 MAINTENANCES SERVICES AND TROUBLESHOOTING

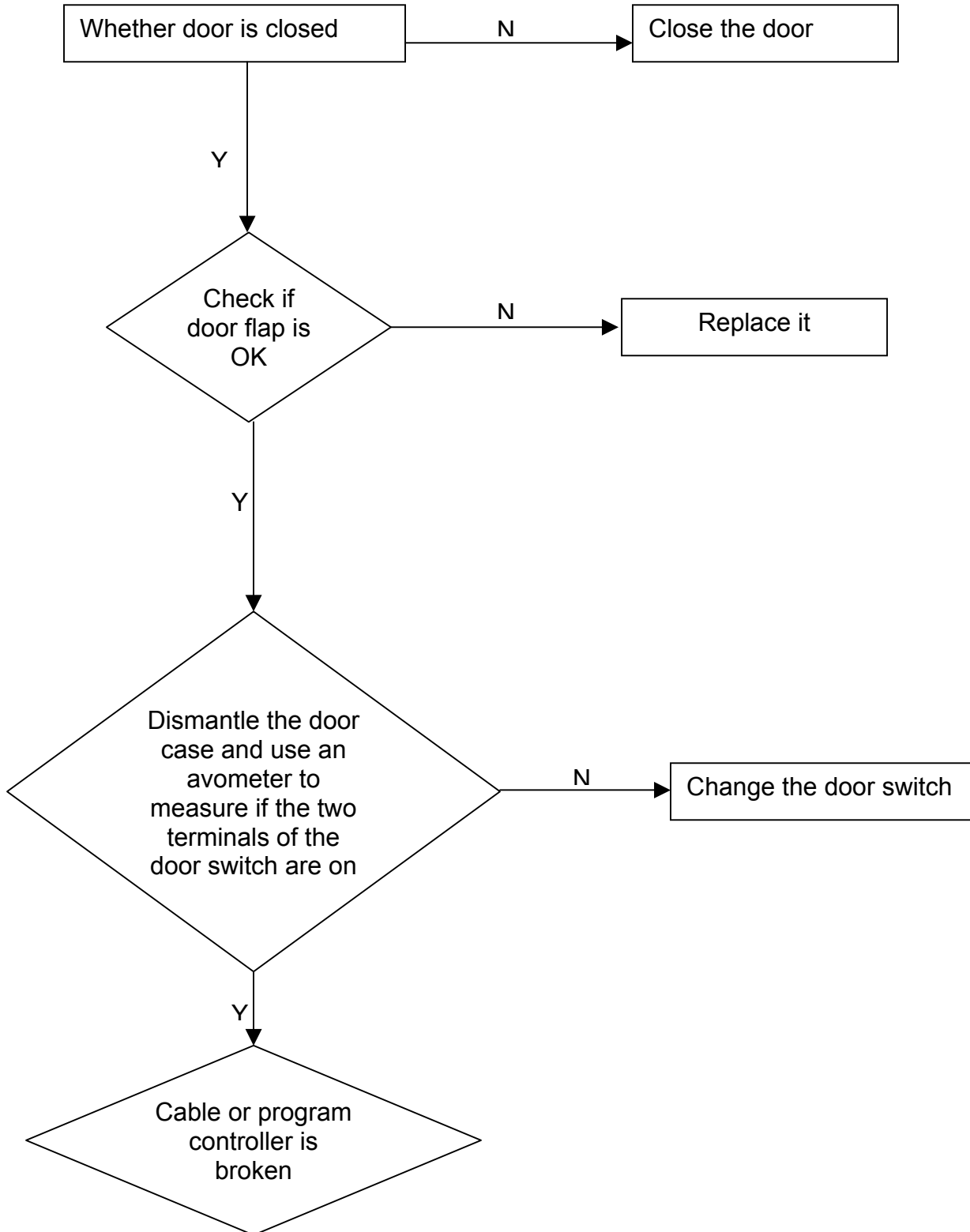
11.1 Maintenances Services

It may occur that the dishwasher does not function or does not function properly. Before calling for assistance, let us see what can be done first: have you forgotten to press one of the buttons or to perform an essential operation?

11.2 Troubleshooting

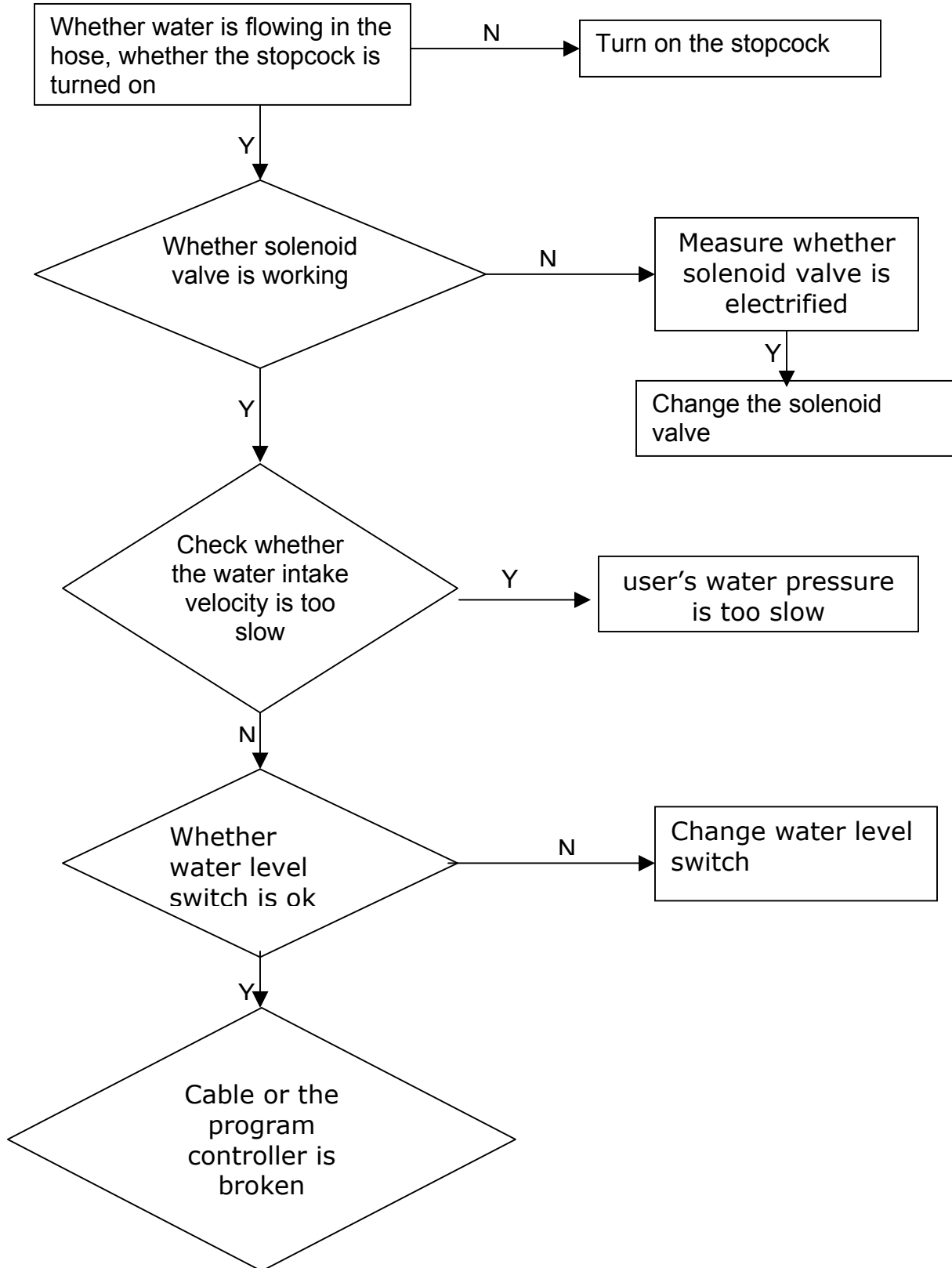
Analysis of common breakdowns

- Door Switch trouble



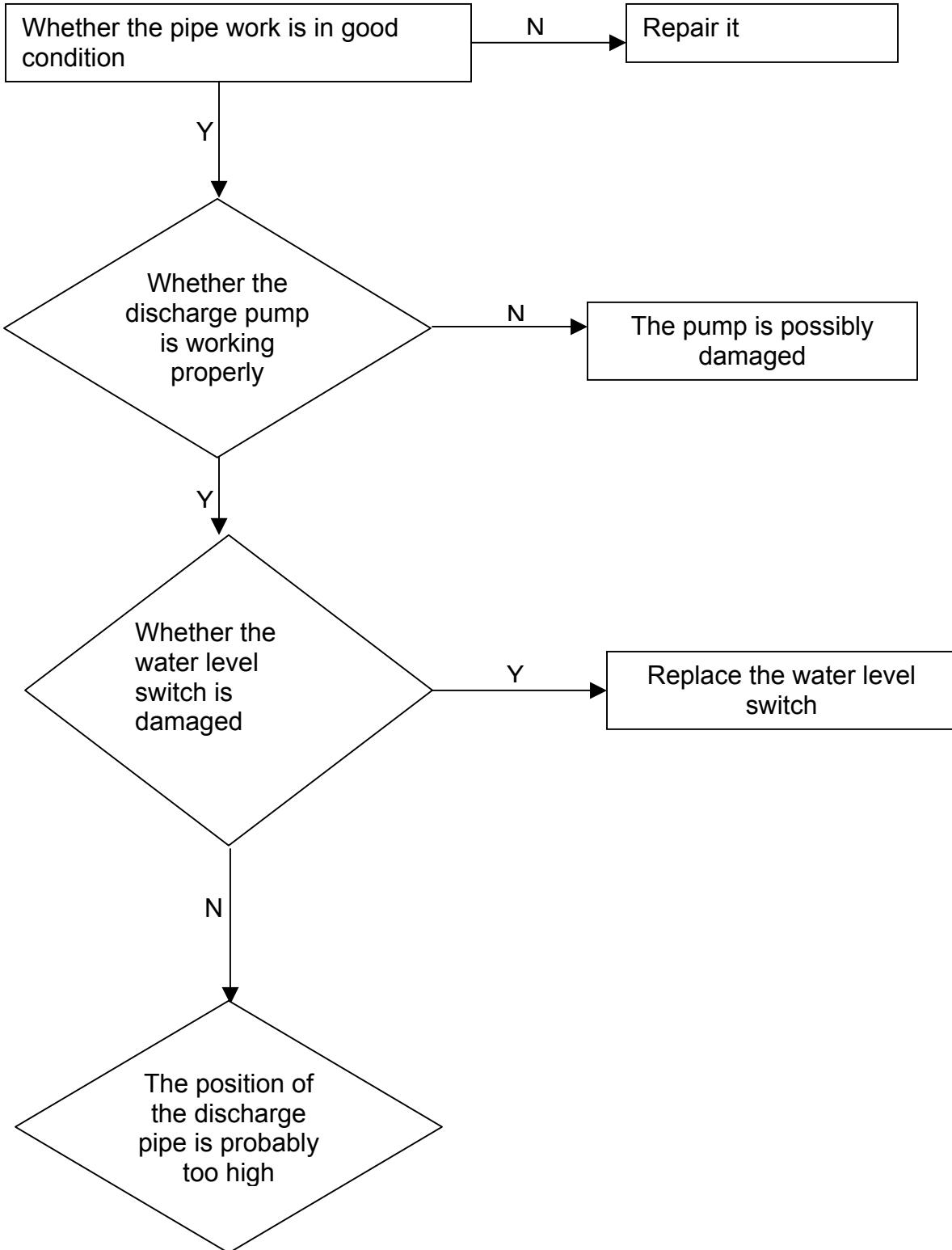
- Water supply trouble

Check:



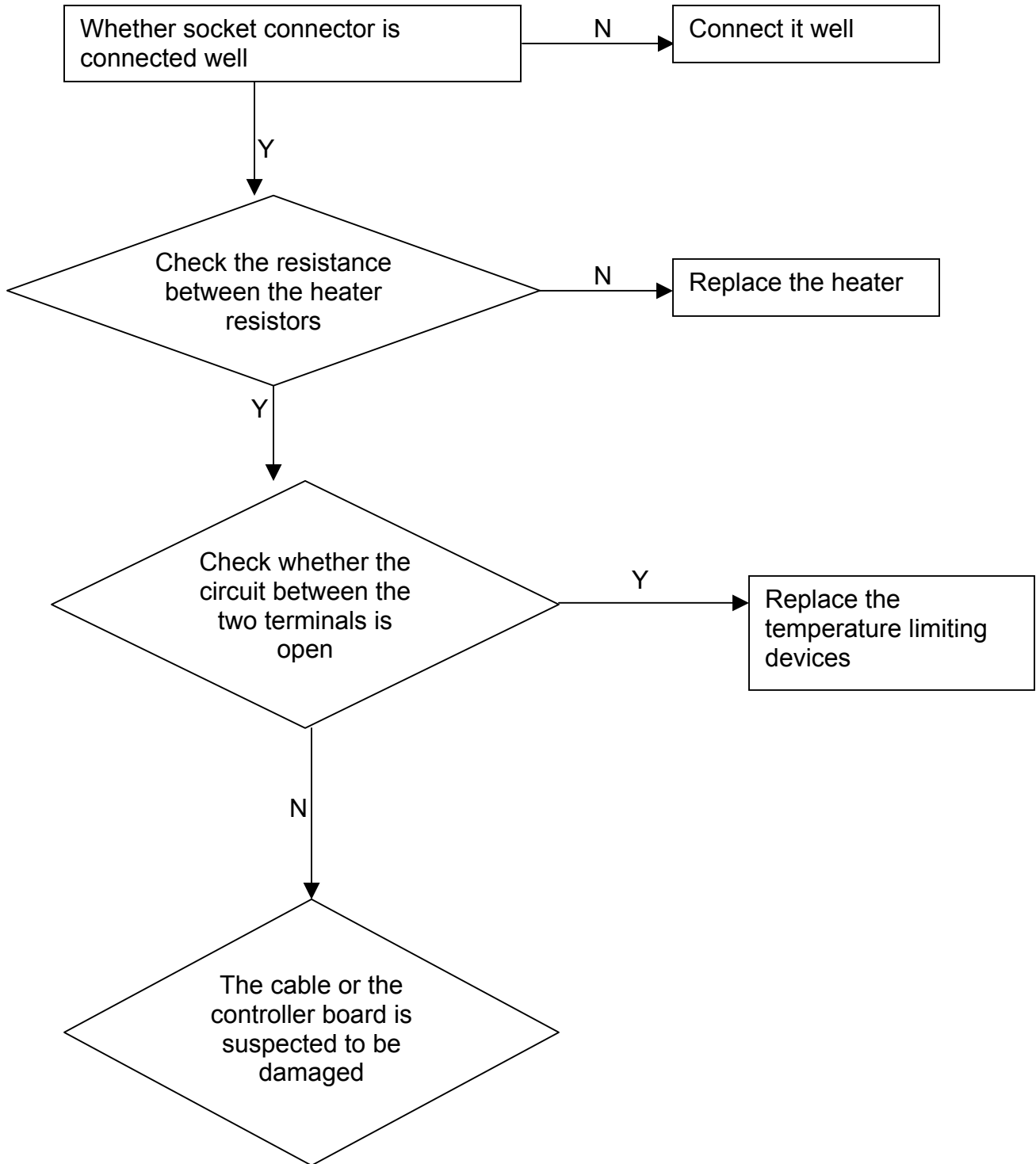
- Water Discharge Trouble

Check:



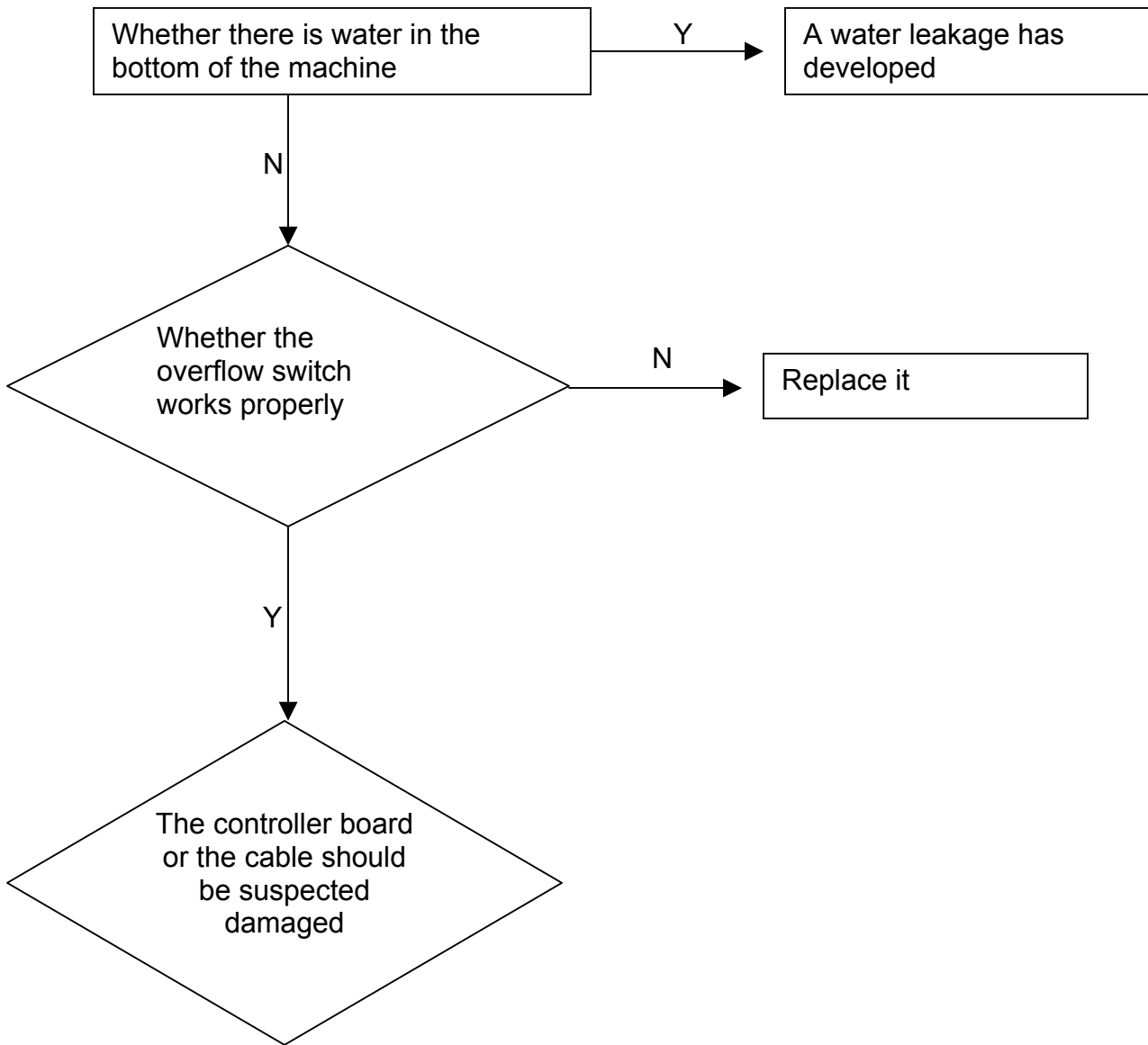
- Heating trouble

Check:



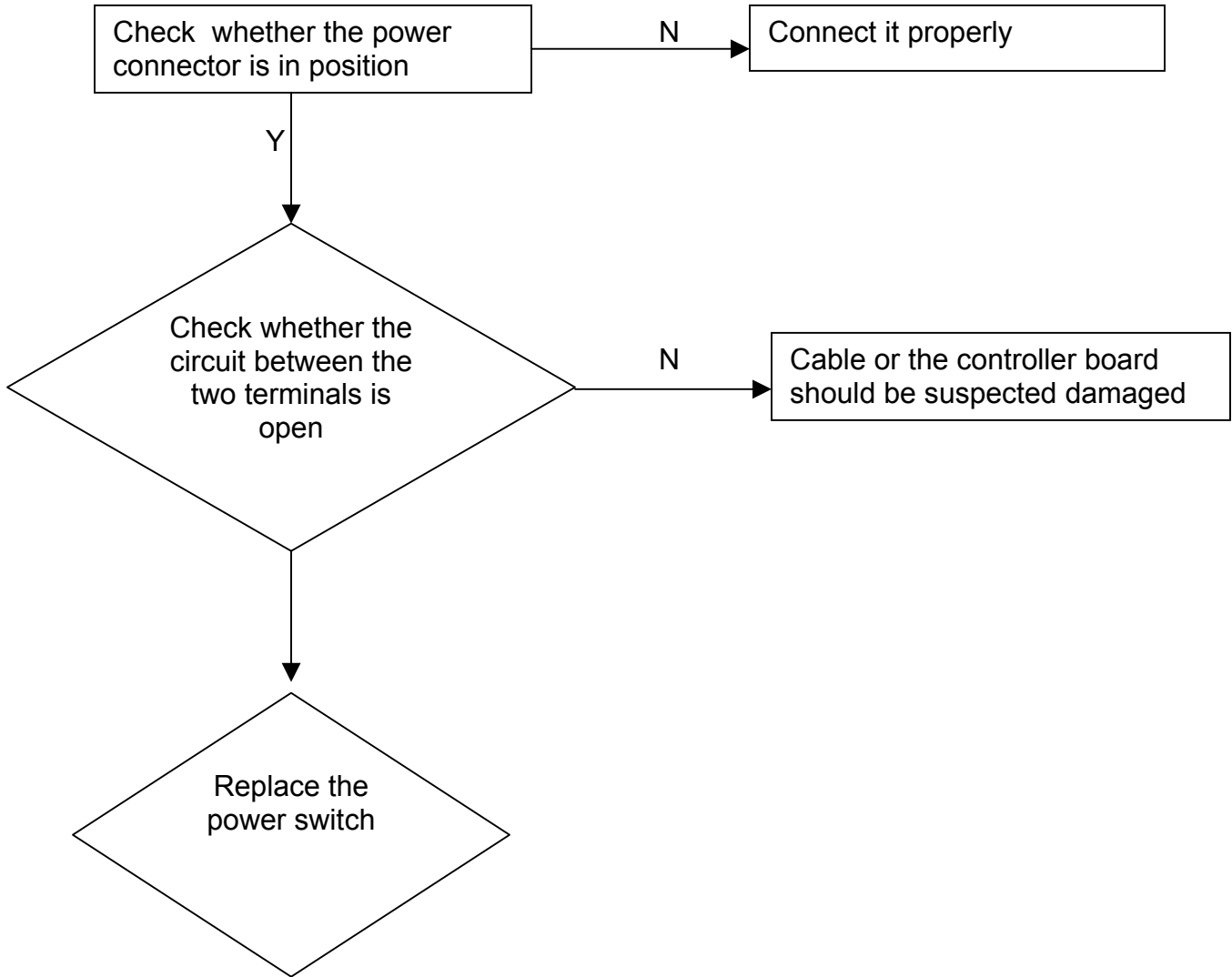
- Overflow Trouble

Check:

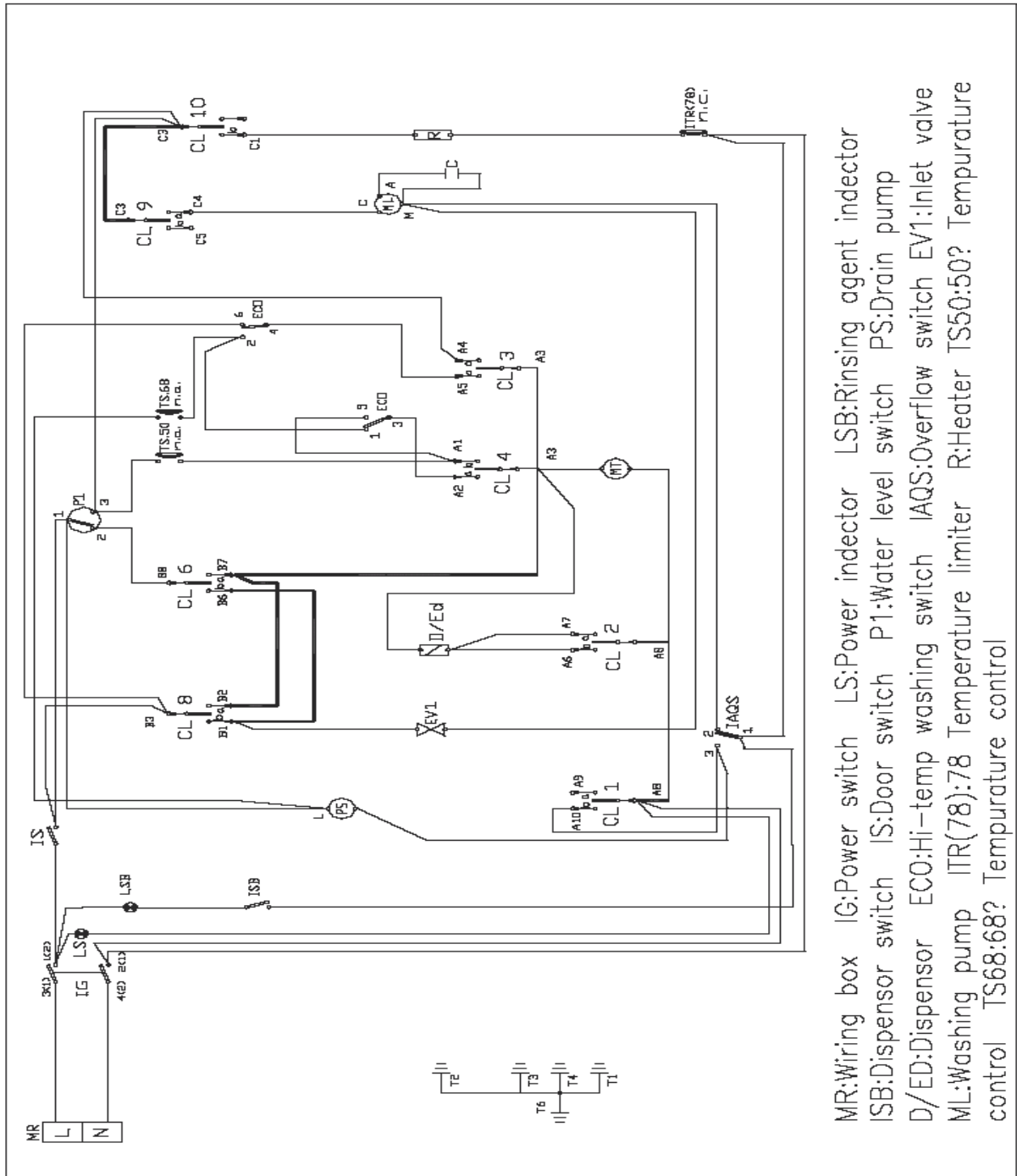


- Power Trouble

Check:



12. CIRCUIT DIAGRAM



ESD Service Information

1. Resistance Measurements

Component	Resistance
Convection Dry Fan Motor	32Ω
Dispenser Door Solenoid	295Ω
Fill Valve Solenoid	961Ω
Heating Element	12-15Ω
Pump Motor	30Ω
Temperature Sensor	Approximately 1100Ω @ 70° F
Upper Wash Valve	1061Ω
Wash Motor – Single Direction	Start Winding (A) - 25Ω Run Winding (M) - 17Ω

2. Troubleshooting & Codes

Pushing “**Power**” during “**Wash**” cycles cancels **ALL** programs
Hi – Temp Wash boosts the water temperature to 161°F - 167° F

Flashing Light	Problem
Pots & Pans	Problem with door latch or door or wiring
Pots & Pans, Normal Wash, Light Wash	Low or no water fill
Pots & Pans, Light Wash, Rinse & Hold	Water not draining
Pots & Pans, Normal Wash, Light Wash, Rinse & Hold	Water overflow to base pan. Float switch is activated